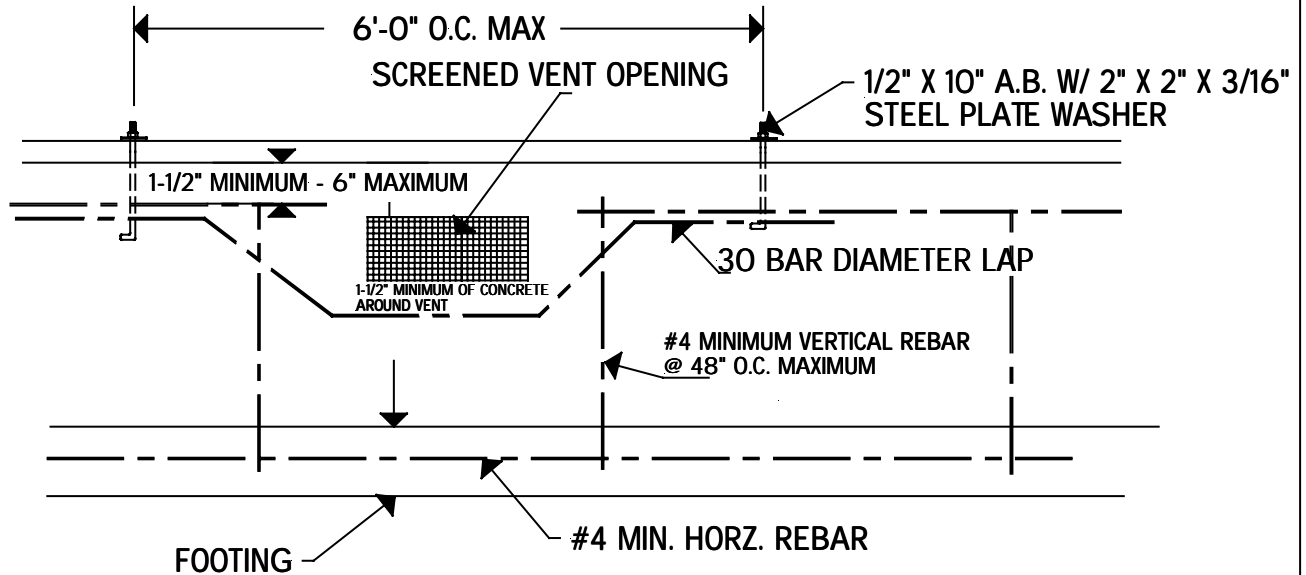




Southwest Washington Chapter of ICBO

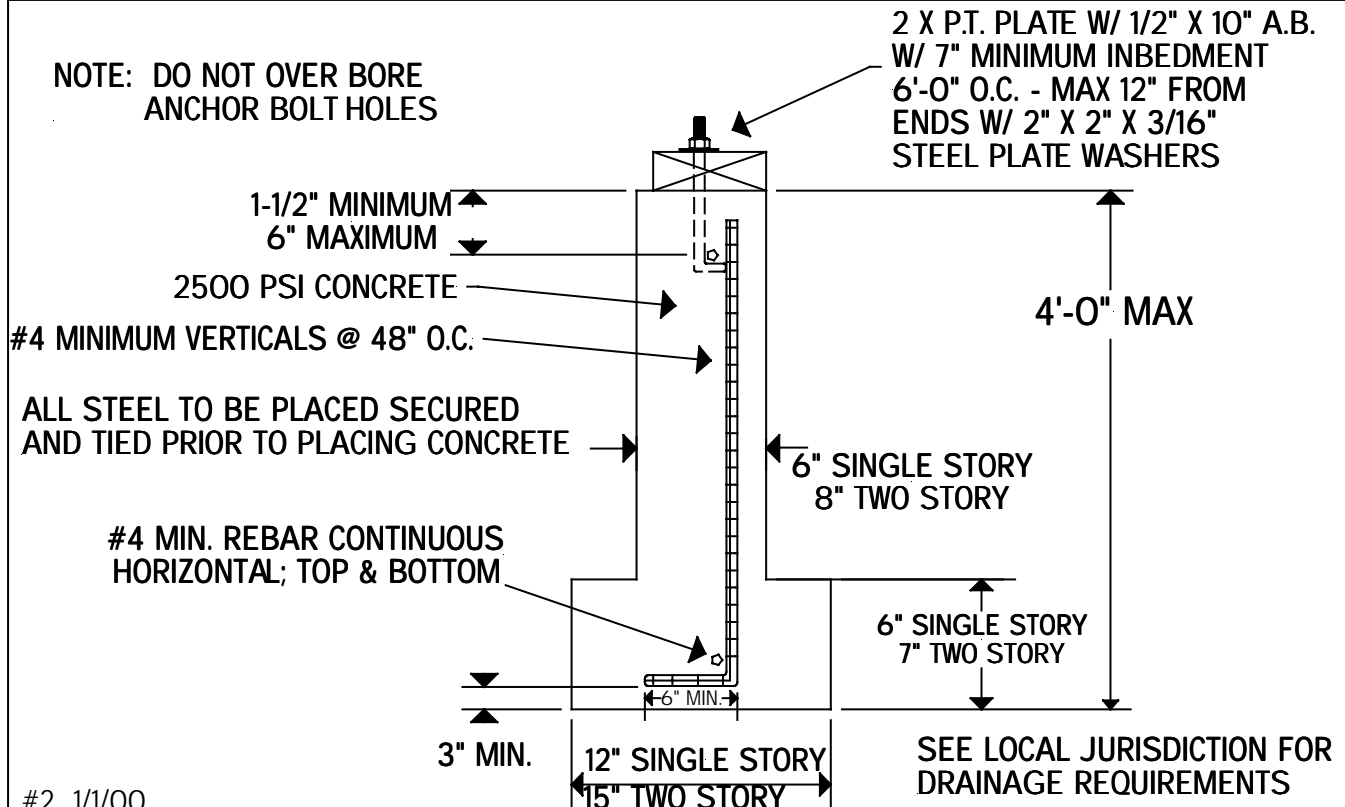
This detail is a clarification of an alternate method of construction.
This alternate method of construction is accepted in the following
Regional Jurisdictions

Clark County, Cowlitz County, City of Camas, City of Centralia, City of Kalama
City of Ridgefield, City of Vancouver, City of Washougal, City of Woodland



ELEVATION AT FOUNDATION VENT OPENING

NOTE: DO NOT OVER BORE ANCHOR BOLT HOLES



#2 1/1/00

RESIDENTIAL FOUNDATION WALL UP TO 4'-0"

DWG BY LGN