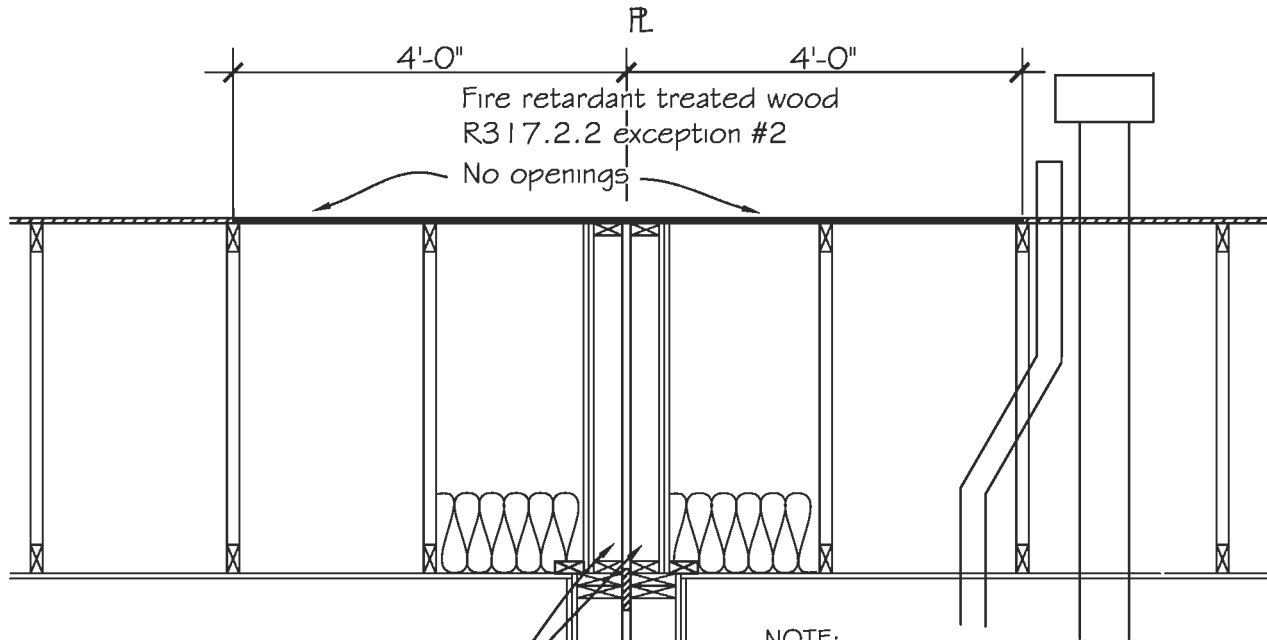


# Southwest Washington Chapter of ICC

This construction detail is illustrative of the minimum standard of construction based upon the 2003 IRC / WAC 51-51



Two-hour fire-resistance-rated wall  
2x4's @ 24" o.c. or trusses w/ vert.  
members @ 24" o.c. w/ two layers of  
5/8" type 'x' each side, each wall

2x6 walls

continuous solid sawn joists  
(3) each side

fire blocking @ ceiling and  
floor level

2 layers of 5/8 Type "X" Gyp. Board  
run continuous on each side of wall  
full length to exterior sheathing

12" min

one #5 or 2-#4 rebar  
located at middle third  
R403.1.3.2

**NOTE:**

- No openings or penetrations permitted on roof or eaves within the 4' protected fire-resistance-rated wall
- Separate roof drains required
- Separate utilities and meter required
- The common wall cannot contain plumbing or mechanical equipment, ducts, or vents. Section R317.2
- min. requirement-Class C roof covering and roof fire-sheathing that is of noncombustible material or treated wood for a distance of 4' on each side of the wall. Section R317.2.2
- One-hour construction required for exterior roof overhangs within 3' of prop. line
- Fasteners for fire-retardant treated wood shall be of hot-dipped galvanized steel, stainless steel, silicon bronze or copper.

1/2" Diam. x 10" A.B. @ 6'-0" o.c.  
w/ 1/4"x2"x2" plate washers-  
R403.1.6

12" min

legal recorded agreement  
required for maintenance  
at property line

This detail is similar to details R317.2-C through R317.2-F with the exception of the floor which illustrates slab construction. Detail FR-21 condition is illustrated with concrete slab replacing wood floor. See details FR-22, FR-23 and FR-24 for additional information.