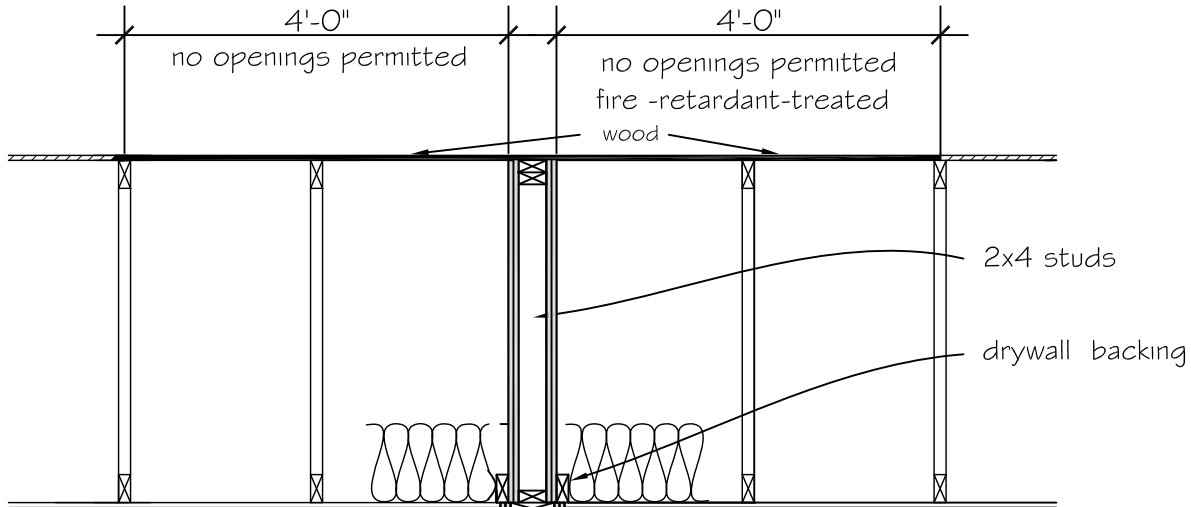




Southwest Washington Chapter of ICC

This construction detail is illustrative of the minimum standard of construction based upon the 2009 IBC / WAC 51-50

Visit our web site at: www.sww-icc.org



2 layers of 5/8" Type X' Gypsum wallboard each side of wall-or listed assembly

MIN. 2x4 wood studs @ 16" o.c. with two layers of 5/8" Type X gypsum wallboard each side.

Base layers applied vertically and nailed with 6d cooler or wallboard nails at 9" o.c. Face layer applied vertically or horizontally and nailed with 8d cooler or wallboard nails at 7" o.c. See IBC Table 720.1(2) Item #14.1.5. Opening protection limit to 156 sf or 25% of the width of the wall. 90 min. opening protection Per IBC 715.4

NOTE:

- No openings or penetrations permitted on roof or eaves within the 4' of the protected fire wall area
- Entire building with Class B roof assembly
- Horizontal continuity-fire wall may terminate at the interior surface of exterior sheathing provided the exterior wall has a one-hour rating for 4' on both sides of the fire wall. Openings on such exterior walls shall be protected by a 3/4 hr. assembly. IBC 706.5 Except #1. See also IBC 706.5 exception #2 & #3 for non-combustible and sprinkler exceptions.
- Where fire wall intersects exterior walls, exterior wall shall have one-hour rating w/3/4 hr opening protection for 4' on both sides of exterior wall. See IBC Section 706.5.1. Exterior wall intersections at fire walls that form an angle equal to or greater than 180 degrees do not need exterior wall protection.
- Fasteners for fire-retardant treated wood shall be of hot-dipped zinc-coated galvanized steel, stainless steel, silicon bronze or copper. See IBC 2304.9.5.
- Fire walls shall extend to the outer edge of horizontal projecting elements such as balcony, roof overhangs, canopies, marquees and similar projections that are within 4 feet of the fire wall. IBC 706.5.2
Exception: Horizontal projecting elements without concealed spaces provided the exterior wall has one-hour rating on both sides of the fire wall for a distance not less than the depth of the projecting elements.

CONDITION SHOWN WITH RAFTERS OR TRUSSES PARALLEL TO FIRE WALL
IBC SECTION 706.6 EXCEPTION 4.3 - NO PARAPET REQUIRED WHEN BUILDING IS PROTECTED 4' FEET EACH SIDE OF FIRE WALL W/ FIRE RETARDANT-TREATED WOOD