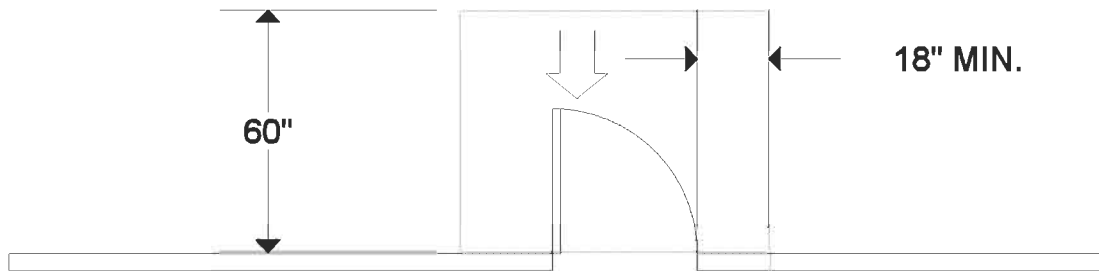


Southwest Washington Chapter of ICC

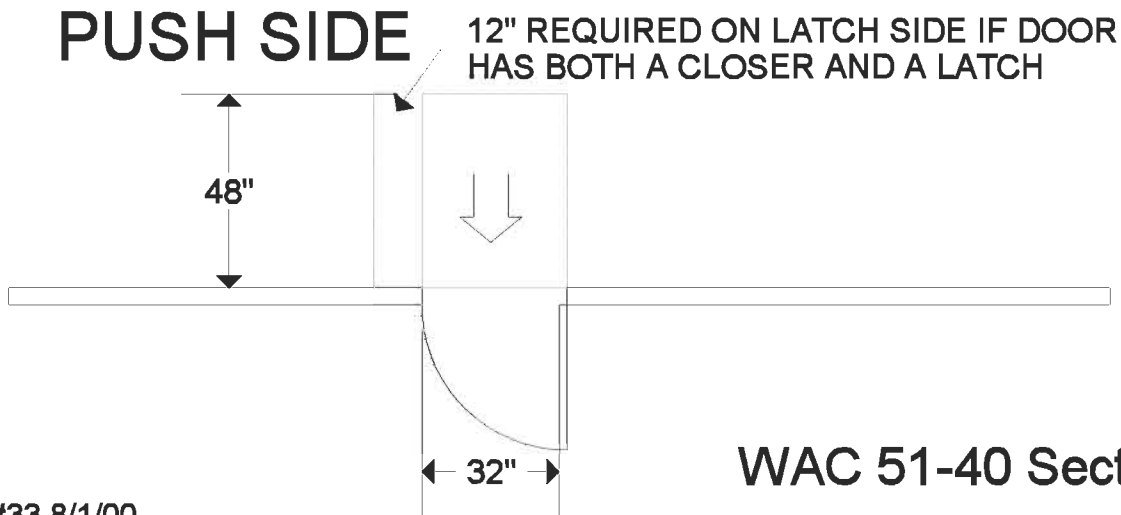
This construction detail is accepted as meeting the minimum standard of construction as based upon the 2003 IBC requirements and is accepted in the following regional jurisdictions

City of Battle-Ground, Clark County, Cowlitz County, City of Camas, City of Centralia, City of Kalama
City of Longview, City of Ridgefield, City of Vancouver, City of Washougal, City of Woodland

FORWARD APPROACH PULL SIDE



FORWARD APPROACH PUSH SIDE



WAC 51-40 Section 1106.10.3

#33 8/1/00