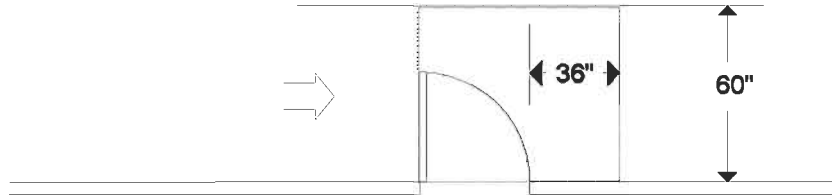


# Southwest Washington Chapter of ICC

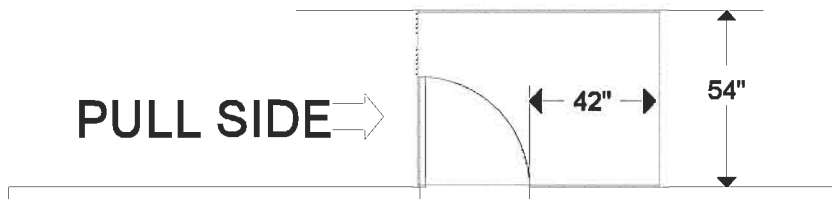
This construction detail is accepted as meeting the minimum standard of construction as based upon the 2003 IBC requirements and is accepted in the following regional jurisdictions

City of Battle-Ground, Clark County, Cowlitz County, City of Camas, City of Centralia, City of Kalama  
City of Longview, City of Ridgefield, City of Vancouver, City of Washougal, City of Woodland

**PULL SIDE**



**PULL SIDE**



**MINIMUM IF DOOR HAS BOTH A LATCH AND CLOSER**

