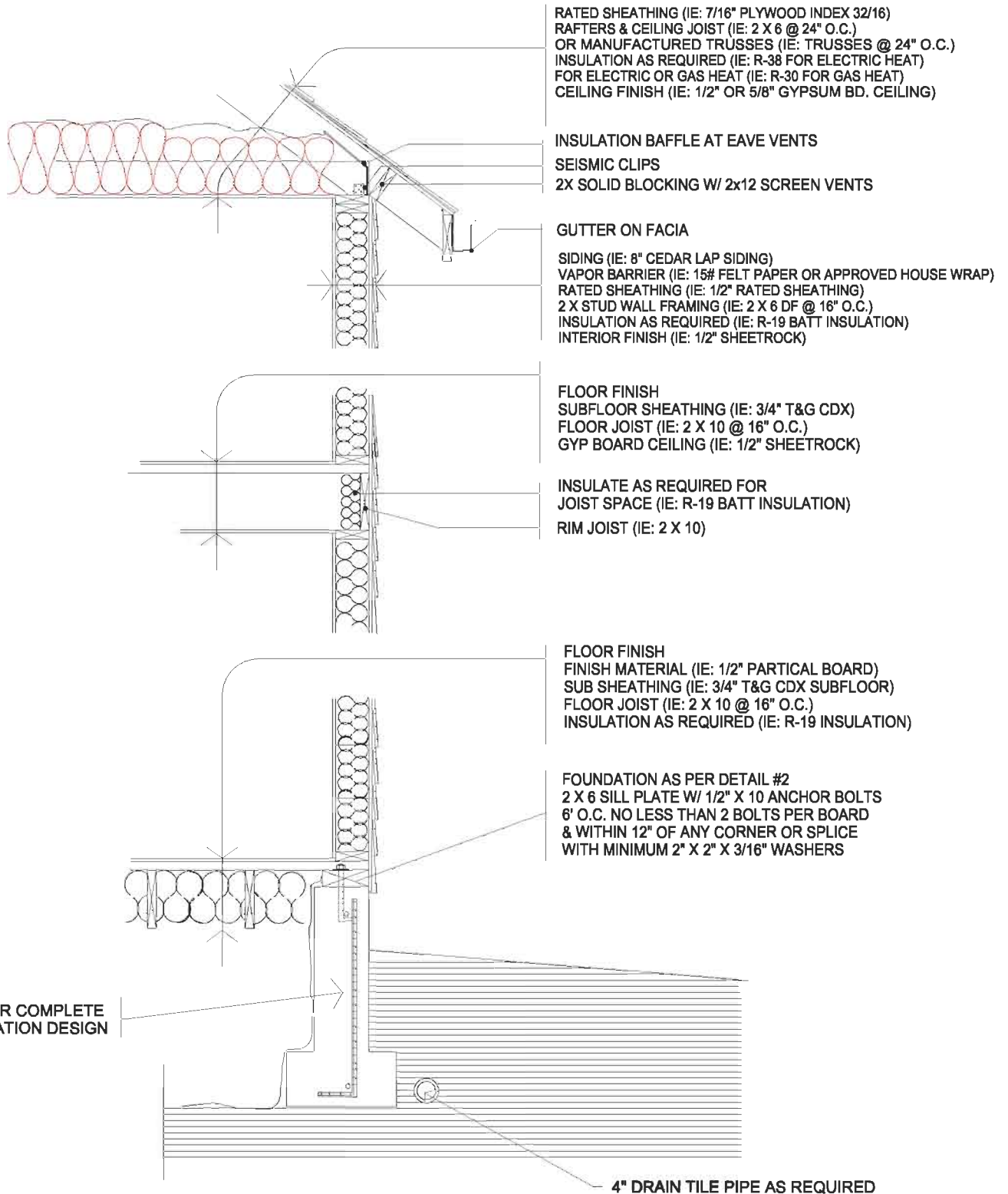


Southwest Washington Chapter of ICC

This construction detail is accepted as meeting the minimum standard of construction as based upon the 2003 IRC requirements and is accepted in the following regional jurisdictions

City of Battle-Ground, Clark County, Cowlitz County, City of Camas, City of Centralia, City of Kalama
City of Longview, City of Ridgefield, City of Vancouver, City of Washougal, City of Woodland



#37 - 8/1/00

Typical Wall Section

DWG BY LGN