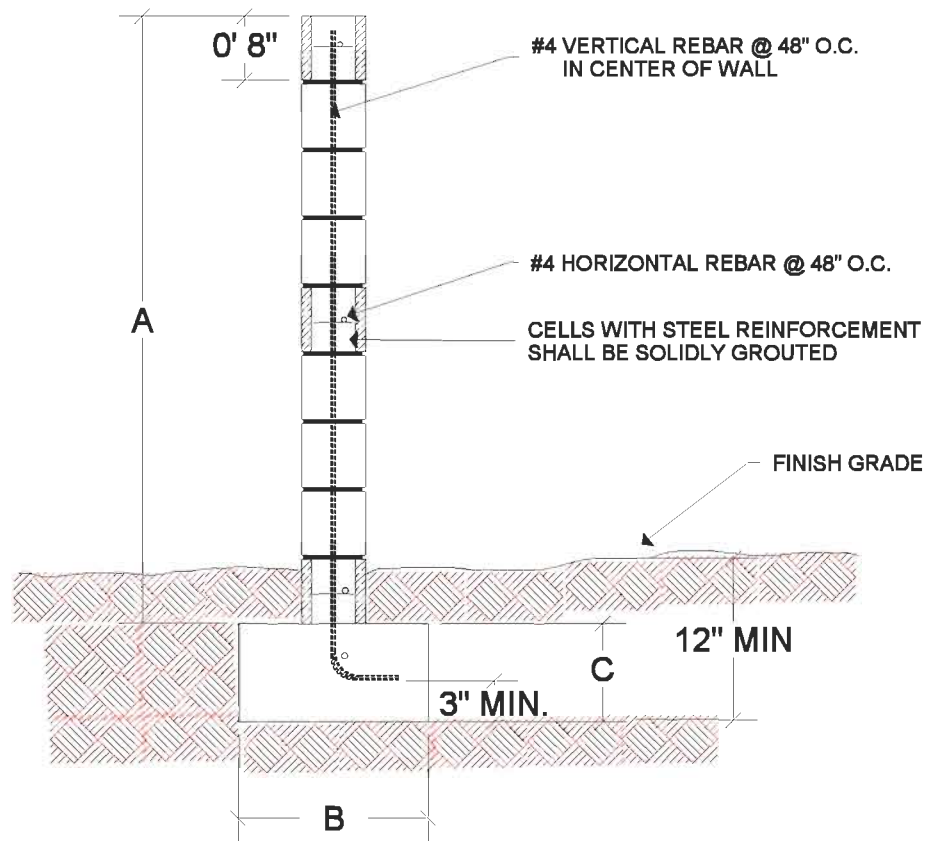


# Southwest Washington Chapter of ICC

This construction detail is accepted as meeting the minimum standard of construction as based upon the 1997 UBC requirements and is accepted in the following regional jurisdictions

City of Battle-Ground, Clark County, Cowlitz County, City of Camas, City of Centralia, City of Kalama  
 City of Longview, City of Ridgefield, City of Vancouver, City of Washougal, City of Woodland



A	4 FT.	5 FT.	6 FT.
B	14"	18"	24"
C	10"	10"	10"

THIS IS A SUGGESTED METHOD OF CONSTRUCTING A FREE STANDING MASONRY WALL