

Southwest Washington Chapter of ICC

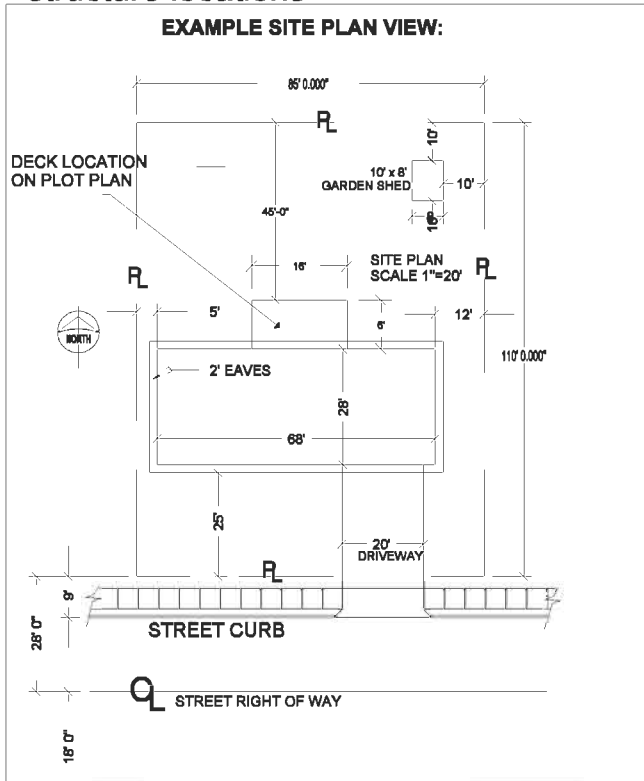
This construction detail is accepted as meeting the minimum standard of construction as based upon the 2004 IBC / WAC 51-50 requirements and is accepted in the following regional jurisdictions

Clark County, Cowlitz County, Skamania County, City of Camas, City of Centralia, City of Kalama, City of Longview, City of Ridgefield, City of Vancouver, City of Washougal, City of Woodland

1. Draw a plan view of your structure as it relates to all your property lines.

drawing should be fully dimensioned and should include all property lines and house or structure locations

SCALE = 1/4" OR 1/8" = 1' TYPICAL



SITE EXAMPLE