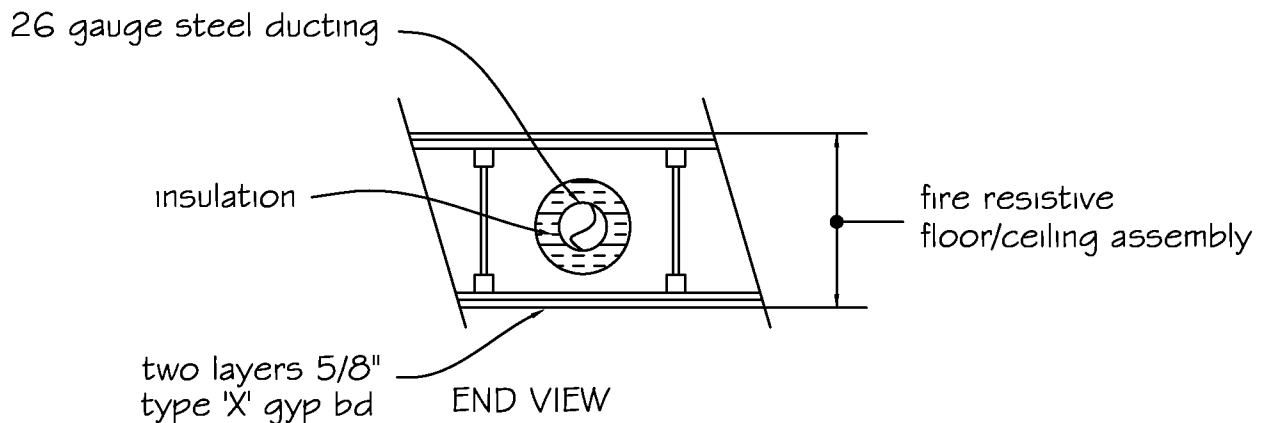


SIDE VIEW



One-Hour Rated Floor/Ceiling Assembly

Notes :

1. Fire caulk all penetrations through built-up box
2. 1-1/2" mineral wool with 1" clearance from duct to combustibles or 3-1/2" fiberglass with 2" clearance, either option insulated for fifteen feet
3. Secure insulation to ducting with tie wire, and support duct to maintain clearances
4. Insulation requirement may be substituted with double layer 5/8" type X gypsum wallboard chase to vent termination