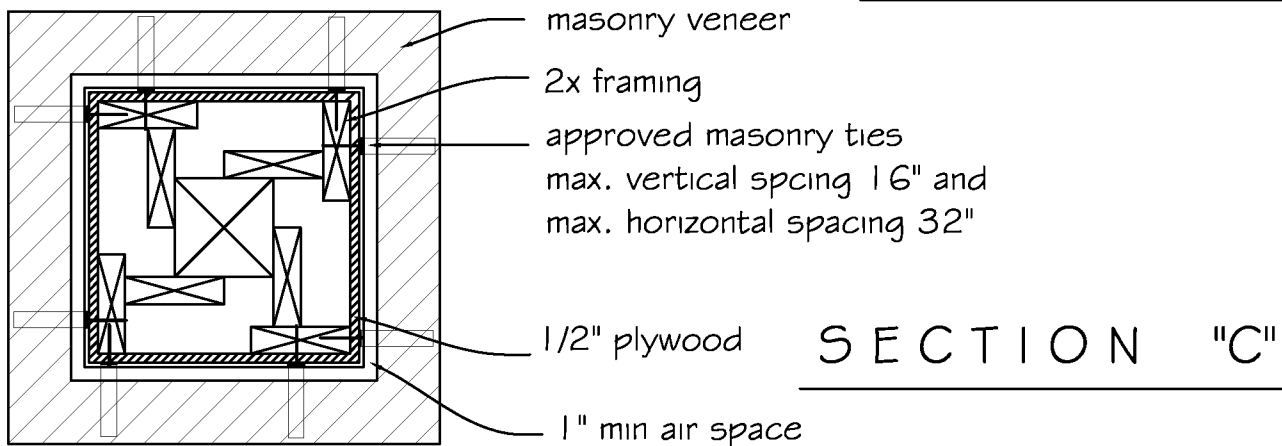
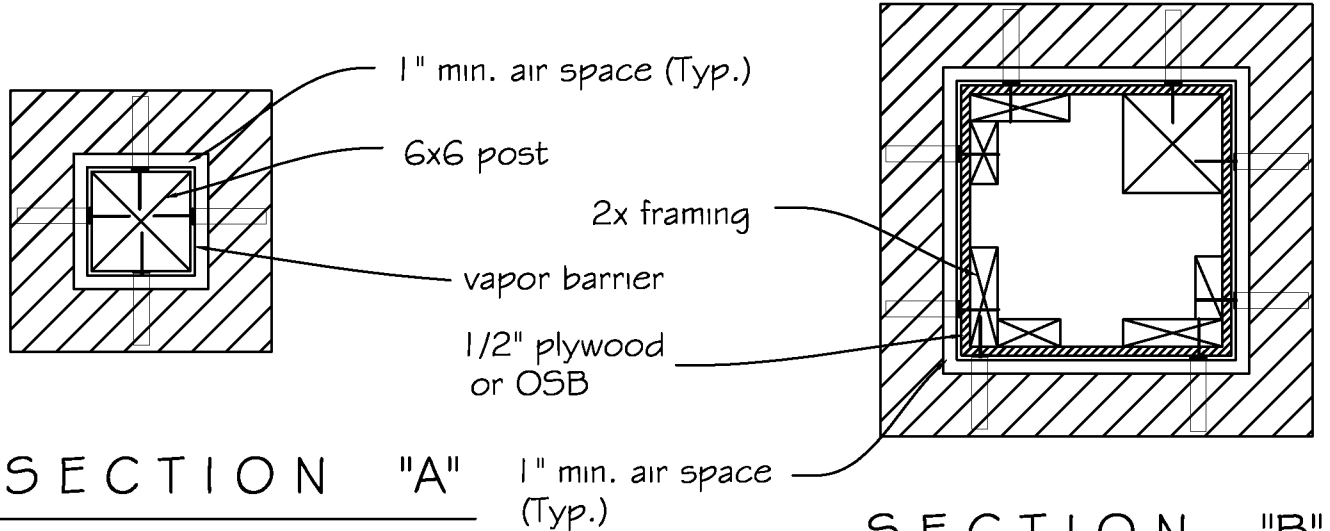


Southwest Washington Chapter of ICC

This construction detail is illustrative of the minimum standard
of construction based upon the 2003 IRC / WAC 51-51



Note:

1. Strand wire ties shall not be less than No. 9 US gage wire and shall have a hood embedded in the mortar joint, or if sheet metal, shall be not less than No. 22 U.S. gage wire by 7/8 inch corrugated. Each tie shall not be spaced more than 18" vertically and not more than 16" horizontally. Anchors shall not support more than 2 sf of veneer. See R703.7.4.1.
2. Veneer to be a maximum weight of 40#/sq.ft.. R703.7.2
3. Install 3/16" diam. weep holes above G.I. flashing @ max. 33" o.c. Typ. R703.7.6
4. Additional ties required around all wall openings greater than 16" in either direction. Ties to be placed within 12" of wall opening. R703.7.4.1.1.
5. Air space. Veneer shall be separated from the sheathing a min. of 1" and a maximum of 4-1/2". R703.7.4.2.