



Southwest Washington Chapter of ICC

This construction detail is accepted as meeting the minimum standard of construction as based upon the 2003 IRC / WAC 51-51 requirements and is accepted in the following regional jurisdictions

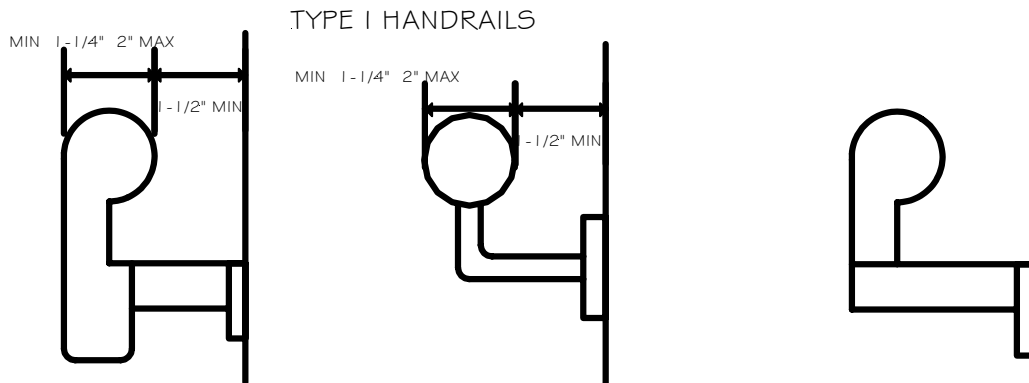
Cities of: Camas, Centralia, Kalama, Ridgefield, Castle Rock, Vancouver, Washougal, Winlock, Woodland, Longview, Battle Ground,
Counties of: Clark, Cowlitz, Skamania, Lewis

R311.5.6.3 Handrail grip size. All required handrails shall be of one of the following types or provide equivalent grasp-ability.

1. Type I. Handrails with a circular cross section shall have an outside diameter of at least 1-1/4 inches (32 mm) and not greater than 2 inches (51 mm). If the handrail is not circular it shall have a perimeter dimension of at least 4 inches (102 mm) and not greater than 6-1/4 inches (160 mm) with a maximum cross section of dimension of 2 1/4 inches (57 mm).

2. Type II. Handrails with a perimeter greater than 6-1/4 inches (160mm) shall provide a graspable finger recess area on both sides of the profile. The finger recess shall begin within a distance of 3/4 inch (19 mm) measured vertically from the tallest portion of the profile and achieve a depth of at least 5/16 inch (8mm) within 7/8 inch (22mm) below the widest portion of the profile. This required depth shall continue for at least 3/8 inch (10mm) to a level that is not less than 1-3/4 inches (45 mm) below the tallest portion of the profile. The minimum width of the handrail above the recess shall be 1-1/4 inches (32 mm) to a maximum of 2-3/4 inches (70 mm).

Edges shall have a minimum radius of 0.01 inches (0.25 mm).



NOTE: OTHER SHAPES MAY BE ACCEPTABLE IF THEY PROVIDE EQUIVALENT GRIPPING SURFACE. SEE IRC SECTION R311.5.6.3

NOT ACCEPTABLE

