

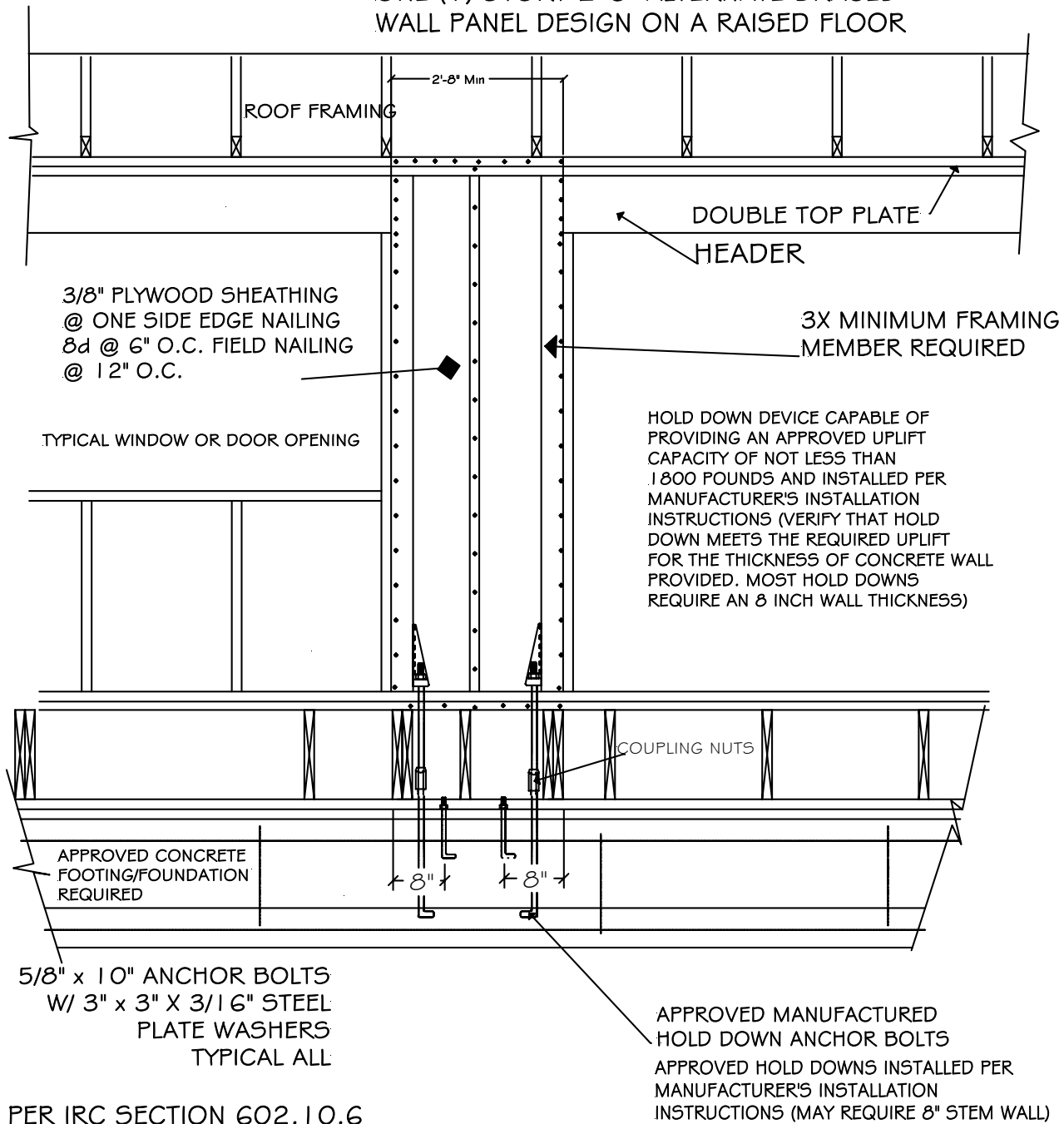


# Southwest Washington Chapter of ICC

This construction detail is accepted as meeting the minimum standard of construction as based upon the 2003 IRC / WAC 51-51 requirements and is accepted in the following regional jurisdictions

**Cities of;** Camas, Centralia, Kalama, Ridgefield, Castle Rock, Vancouver, Washougal, Winlock, Woodland, Longview, Battle Ground,  
**Counties of;** Clark, Cowlitz, Skamania, Lewis

## ONE (1) STORY 2'-8" ALTERNATE BRACED WALL PANEL DESIGN ON A RAISED FLOOR



R602.10.6 2/04

1 STORY 2'-8" RAISED FLOOR ALTERNATE BRACED WALL PANEL

DWG BY LGN