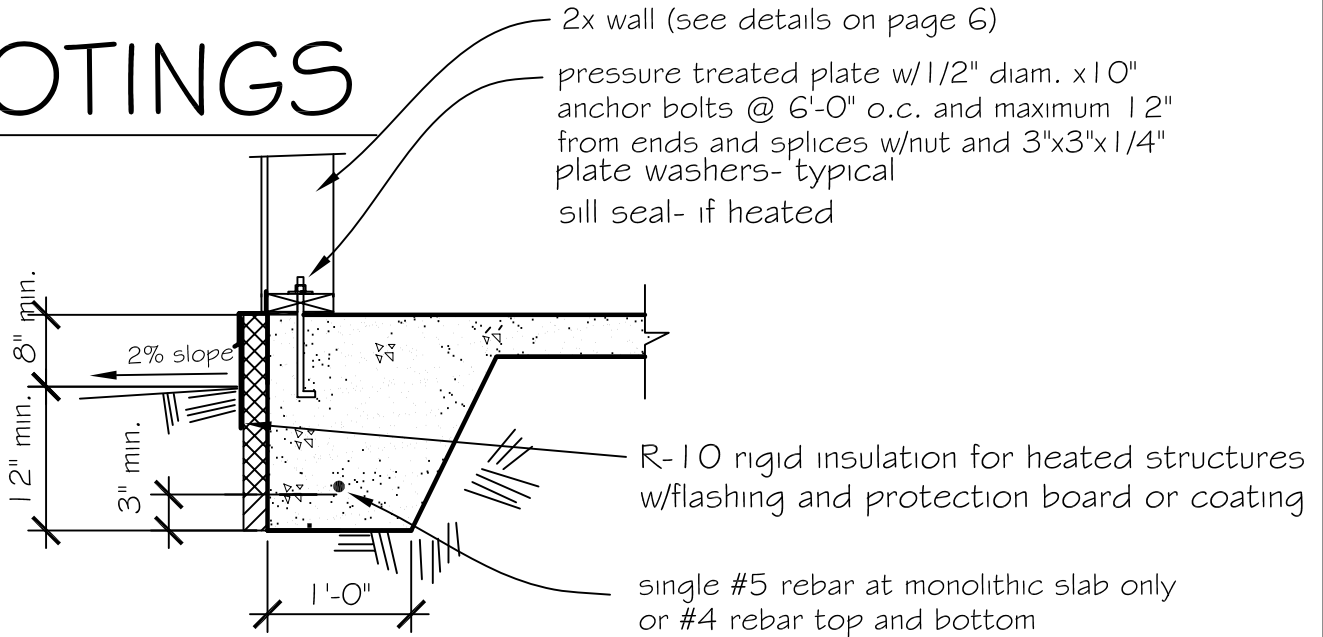
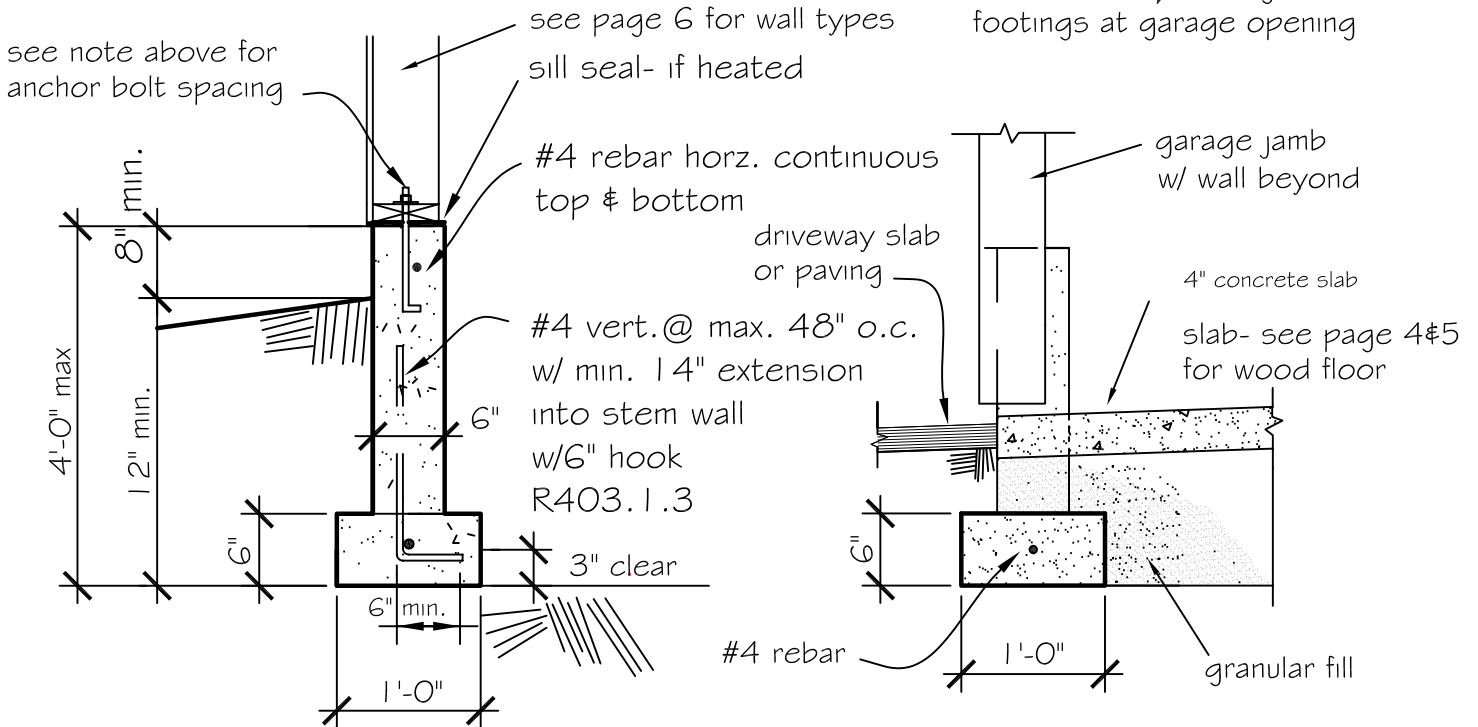


FOOTINGS



1 Monolithic slab/footing

NOTE: 2' wide shear walls and portal frame will require larger continuous footings at garage opening



2 Footing with stem-wall

3 Footing at door opening

NOTE: * Footings over 4'-0" high are required to be designed as retaining walls
* Minimum concrete strength 2500 p.s.f. Lap rebar min. 40 diameters at splices-secure with tie wire