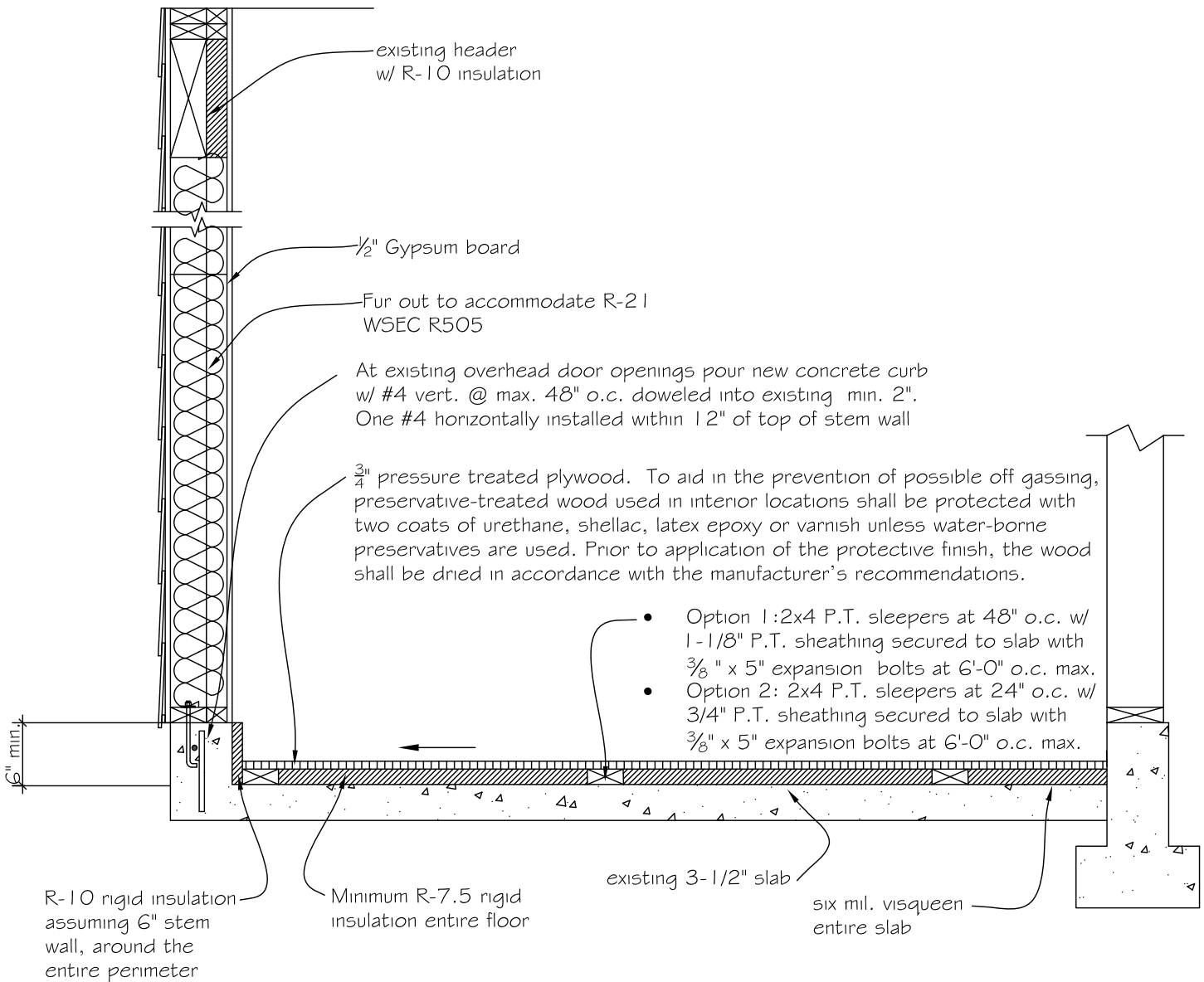


**NOTE:**

- 1) All wood floor framing, including plywood, to be pressure treated, unless vented.
- 2) Provide separate room and outside combustion air to any fuel burning appliances such as furnace or water heater.
- 3) If subfloor space is vented, install batt insulation up to R-30 where possible. Where lumber is in contact with concrete, pressure treated wood is required.
- 4) Insulation requirements Attic R-49 and windows U-.30



NOTE: Radon mitigation required per Appendix F IRC/WAC