

nail roof sheathing to bird blocks w/8d @6" oc at braced panel

overlapped top plates at intersecting walls

2x_studs @16" oc max with structural sheathing see table below for thickness

See table below for edge and field nailing pattern

nail min. 2x sill plate with 16d @ 6" oc

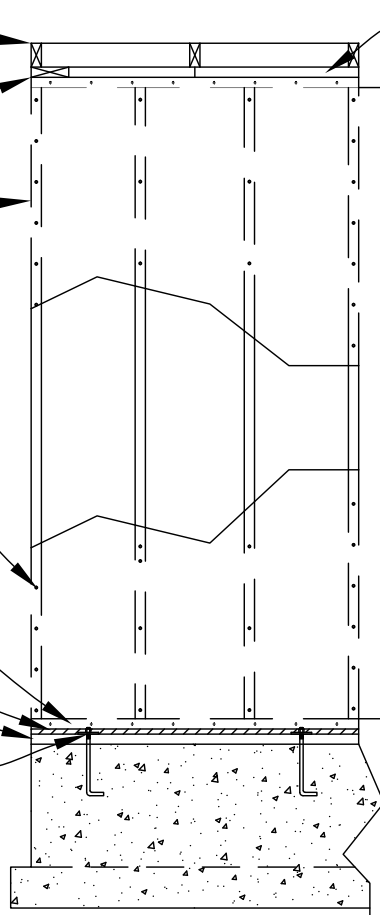
1 1/8" subfloor

Pressure treated 2x plate Foundation Anchorage R403.1.6 1/2" dia. x10" anchor bolt extended 7" min. @ 6'-0" o.c. w/ 3"x3"x1/4" plate washers-R602.11.1

double top plate w/ min. 24" lap at splice R602.3.2

NOTES

1. All vertical panel joints shall occur over, and be fastened to common studs R602.10.4.4.
2. All horizontal joints shall occur over, and be fastened to common blocking of minimum 1 1/2" nominal thickness. Blocking not required at Method GB (gypsum board) panels. exception #4 602.10.4.4.
3. See R602.10.2.2.1 for braced wall panels locations.
4. Panel method see table below.
5. For masonry stem wall see R602.10.9 #3.



Max. 10'-0"

Bracing Wall Methods						
references table R602.3 (1), R602.3(3), R602.10.4, R602.10.6.1						
	Methods, Material	Min. thickness sheathing	Fastners	Spacing	Hold downs force	
Intermittent Bracing Methods	WSP wood structural panel	0'-0 3/8"	Ext. 6d common	6" edges, 12" field	X	
			Int. 6d common	6" edges, 12" field		
	GB Gypsum board Interior & exterior	0'-0 1/2"	1 1/2" galvanized roofing nail; staple galvanized			X
			One story 8d	6" edges, 12" field		
	ABW Alternate braced wall panel min. 2'-8"	0'-0 3/8"	First of two stories 8d common	4" edges, 12" field		(2) 3,000 pounds
PFH portal frame with hold-downs	0'-0 3/8"	8d common or galvanized		3" in all framing (studs, blocking and sills) typ.	(2) 3,500 pounds	
cont. sheathing methods	CS-WSP/CS-G cont. sheathed wd. struct. panel/ adj. to garage openings	0'-0 3/8"	Ext. 6d common	6" edges, 12" field	X	
			Int. 6d common	6" edges, 12" field		
					X	